

'Place these numbers on the number line:'

600, 200, 480, 840, 762, 195



'Place these numbers on the number line:'

600, 200, 480, 840, 762, 195



'Place these numbers on the number line:'

600, 200, 480, 840, 762, 195



'Place these numbers on the number line:'

600, 200, 480, 840, 762, 195



'Place these numbers on the number line:'

600, 200, 480, 840, 762, 195



'Place these numbers on the number line:'

600, 200, 480, 840, 762, 195

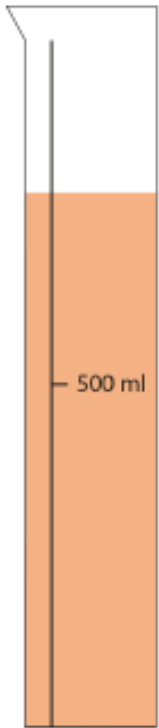
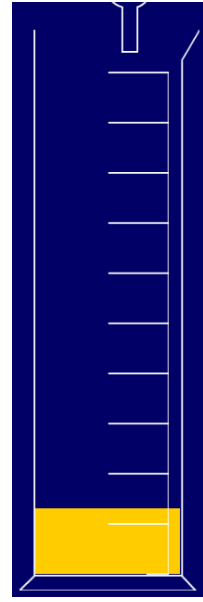
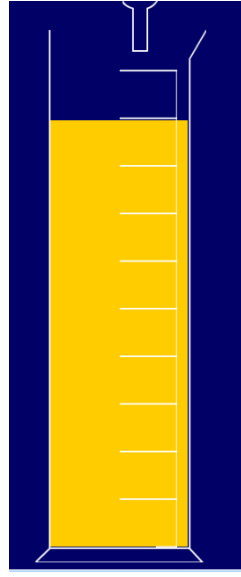
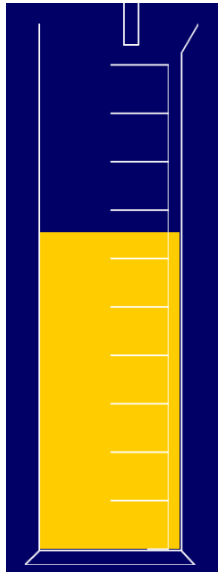
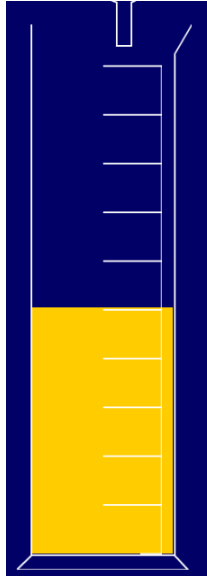




Monday 05.10.20

Applying number lines to the context of measurement

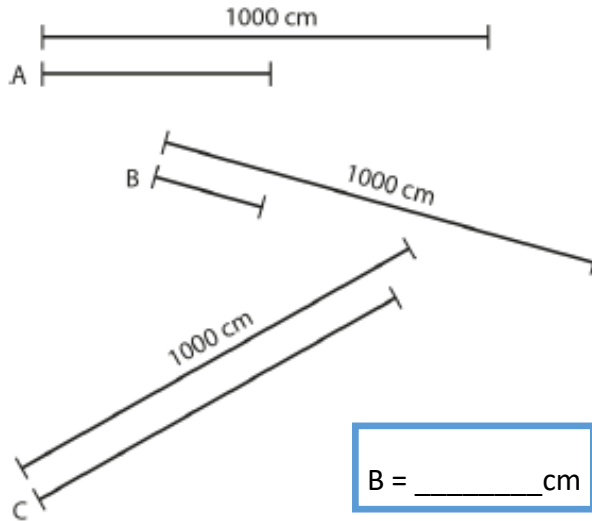
Estimate the amount of liquid in the 1 litre measuring cylinder:



Extra Spicy 

Estimating measures:

- 'Look at lines A, B and C. Can you guess how long they are by comparing them to the 1,000 cm lines?'

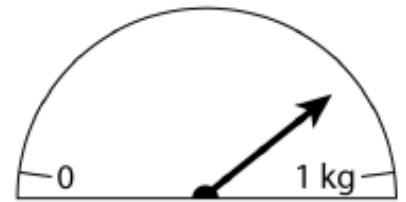


A = _____ cm

B = _____ cm

C = _____ cm

- 'What mass does this show?'



D = _____ g



Tuesday 06.10.20

Journalling—estimating points on a number line and explaining my reasoning

Draw a number line in your book. Make the starting point 0.

Make the end point 100.

Choose 6 numbers and estimate where they would go on your number line. Explain your thinking.

Extra Spicy 

Draw another number line in your book. This time do not start it at 0. Choose a multiple of 100 to start your number line.

Now predict where your 6 numbers will go. Can they all be placed on your new number line?



Tuesday 06.10.20

Journalling—estimating points on a number line and explaining my reasoning

Draw a number line in your book. Make the starting point 0.

Make the end point 1000.

Choose 6 numbers and estimate where they would go on your number line. Explain your thinking.

Extra Spicy 

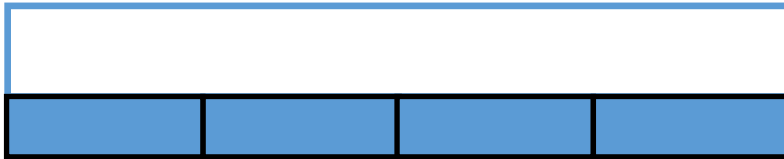
Draw another number line in your book. This time do not start it at 0. Choose a multiple of 100 to start your number line.

Now predict where your 6 numbers will go. Can they all be placed on your new number line?



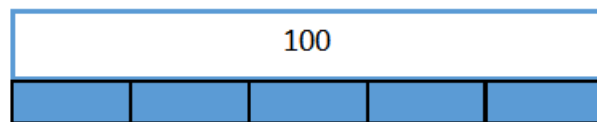
Wednesday 07.10.20

Divide 100 into 2, 4, 5 and 10 equal parts



Is it possible to build these part whole models using Cuisenaire rods? Make sure your whole is the same each time.

What if your whole represents 100? What would each of the other parts represent?



Can you label them on your sheet? How do you know? Explain your thinking.



Thursday 08.10.20

Counting in multiples of 20, 25 and 50

Look at the number patterns.
What do you notice?

5	10	15	20	25	30
50	100	150	200	250	300

I notice that

Complete the number tracks.

50		150	200			350		450	
	750	700	650			500			350

a) 25 50 75 _____ 125 _____

b) 175 150 _____ 100 _____ 50

Circle the mistakes in each sequence:

20, 40, 60, 18, 100, 110, 120, 140

400, 375, 350, 320, 300, 175, 160



Thursday 08.10.20

Extra Spicy



Always, Sometimes, Never

Sort the statements into always, sometimes or never.

- When counting in 50s starting from 0, the numbers are all even.
- There are only two digits in a multiple of 50
- Only the hundreds and tens column changes when counting in 50s.

Now create your own list of **TRUE** statements about multiples of 20 and 25.

What is always true? What is sometimes true?



Thursday 08.10.20

Extra Spicy



Always, Sometimes, Never

Sort the statements into always, sometimes or never.

- When counting in 50s starting from 0, the numbers are all even.
- There are only two digits in a multiple of 50
- Only the hundreds and tens column changes when counting in 50s.

Now create your own list of **TRUE** statements about multiples of 20 and 25.

What is always true? What is sometimes true?



Friday 09.10.20

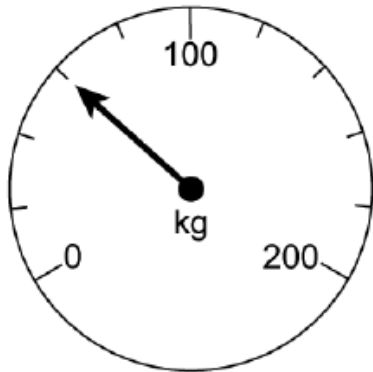
Apply my knowledge of multiples to real life problems

1. How many centimetres long is the ribbon?



The ribbon is _____ cm long. I know this because

2.



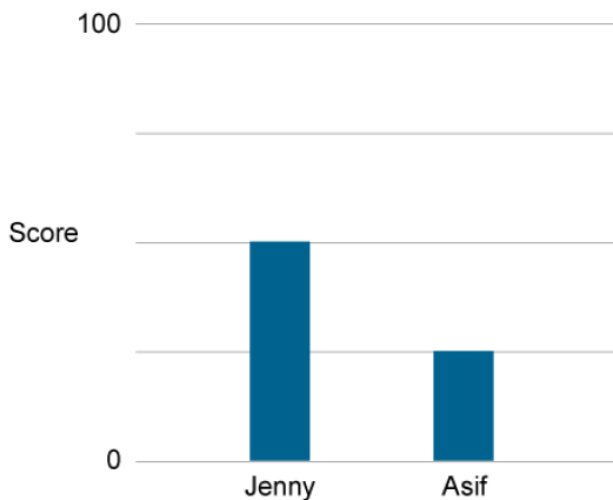
Harris weighs some potatoes on his scales. How much do they weigh?

_____ kg

3. Patricia counts from 0 in multiples of 25. Circle the numbers she will say.

100 25 240 155 400 275 505 350

4.



What were Jenny and Asif's scores?

Jenny _____

Asif _____



Friday 09.10.20

Extra Spicy



5. How many 25p cupcakes can I buy for £5?
6. How many 50cm lengths of wood can I cut from a 3m plank?
7. We raise £100 at the school fair and divide the money equally between 5 charities. How much does each charity get?
8. Fill in the missing numbers.

$100 \div 4 = \square$

$\square \times 20 = 100$

$100 \div 50 = \square$

$25 + \square = 100$



Friday 09.10.20

Extra Spicy



5. How many 25p cupcakes can I buy for £5?
6. How many 50cm lengths of wood can I cut from a 3m plank?
7. We raise £100 at the school fair and divide the money equally between 5 charities. How much does each charity get?
8. Fill in the missing numbers.

$100 \div 4 = \square$

$\square \times 20 = 100$

$100 \div 50 = \square$

$25 + \square = 100$