

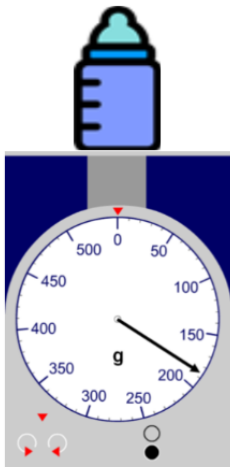


Thursday 02.07.20

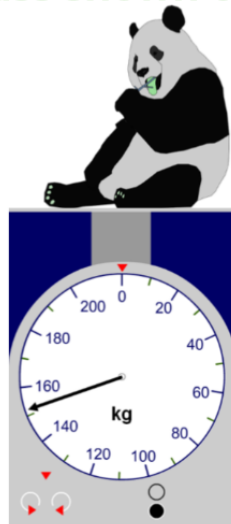
Reading mass on a scale

Part A

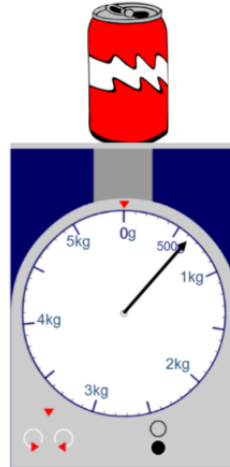
Estimate the mass shown on each scale



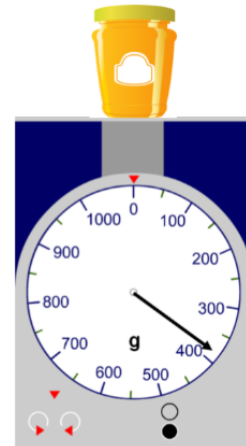
² 1.



2.



3.

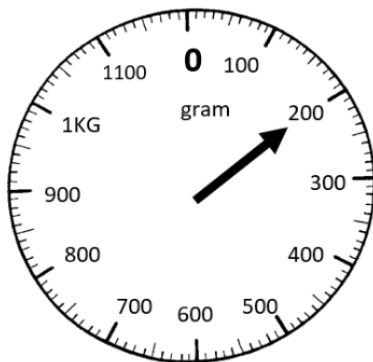


4.

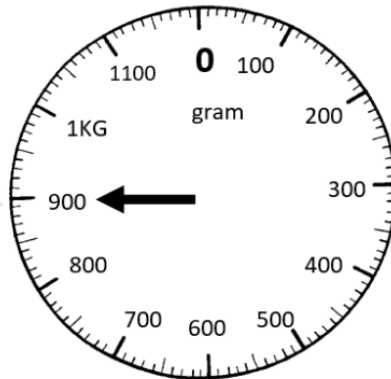


Part B

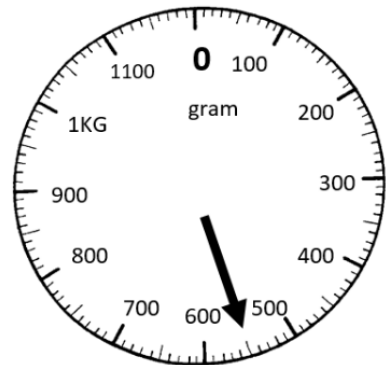
Try and give a more accurate reading of these scales



1,



2,



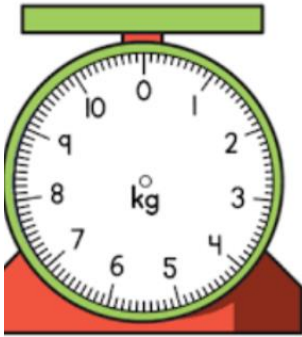
3,

Remember to include the unit (g or kg)

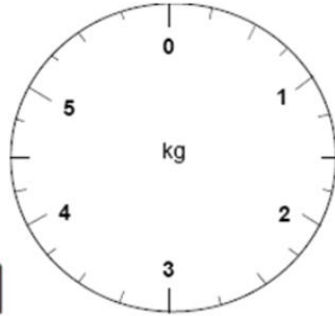


Part C

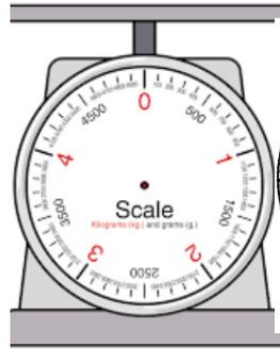
Add the arrow so these scales show the weights below



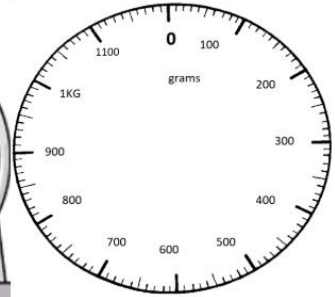
1. 10kg



2. 2500g



3. 3kg



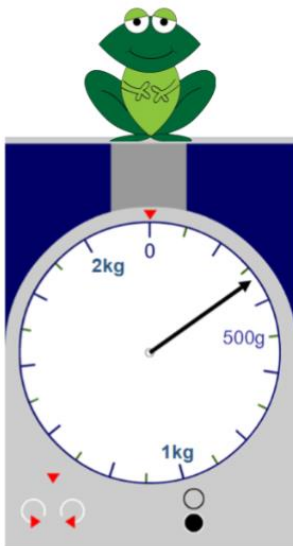
4. 450g

4



Extra spicy

Challenge - can you spot the mistakes made in these 2 answers? Try answering them correctly



The mass shown here is around 460kg



This shows nearly 1kg

